

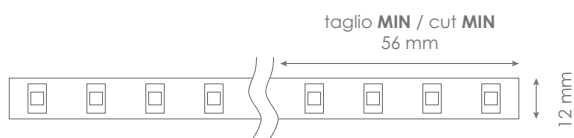
FLEX - PLUS 5000-3000

Led Strip



Alimentazione / Operating Voltage	24 V
Potenza / Power	22 W/mt
Larghezza Pcb / Width Pcb	12 mm
Altezza / Height Stripe	2 mm
Lunghezza / Length Stripe	5000 mm
Taglio segmento/ Length per Cut	56 mm
N° LED	144 / mt
IP	20
Temperatura esercizio Storage Temperature	- 30° C - + 70°C
Lifetime	L70B20 50000H

	Flusso Luminoso Luminous Flux	Efficienza Efficiency	Colore Luce Led Color
DA-PLUS-5000-3000	4073 lm/mt	135 lm/W	3000 K



Via Cadorna, 40/42
20032 Cormano (MI)
Tel. +39 02 84269630
Fax +39 02 84269631
info@dadalighting.com
www.dadalighting.com

FLEX - PLUS 5000-3000

Led Strip

Light efficiency:

163 Lumen/Watt

Output: 4073 lm

Light quality:

CRI: 80,7

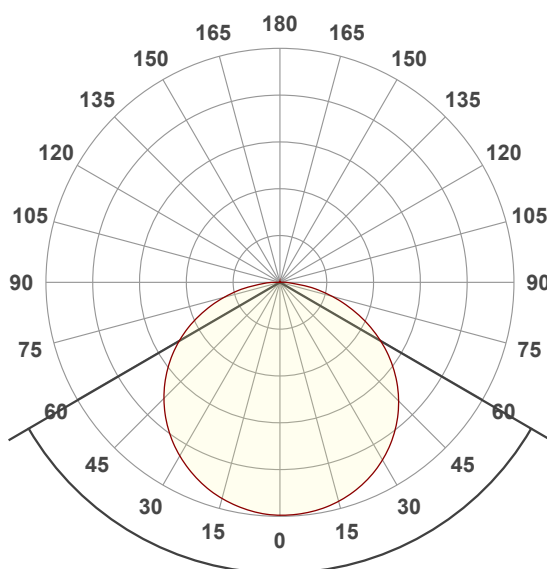
Peak: 1296 cd

Color temperature:

3022 K

Power: 25,0 W

24,0V @ 1,04A



Beam angle

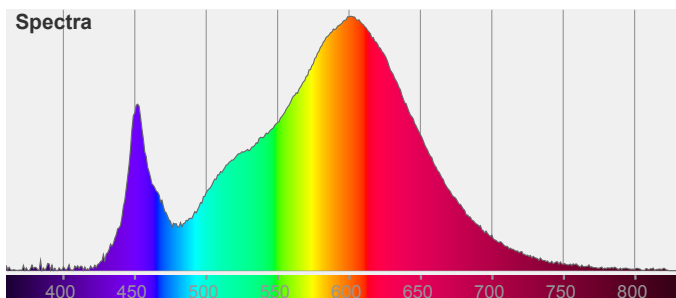
119,6°

Color



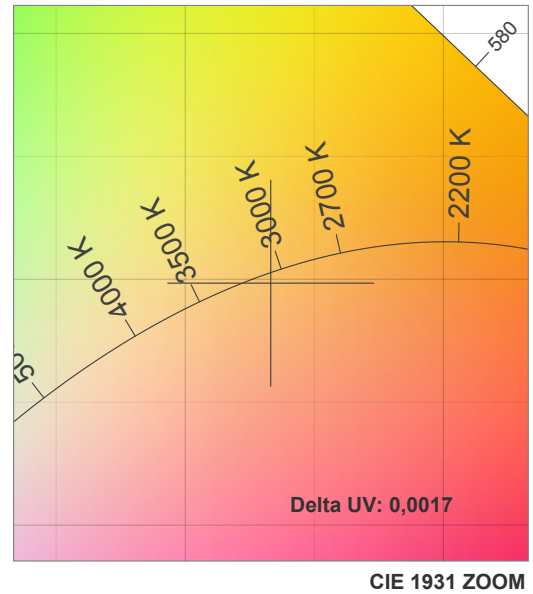
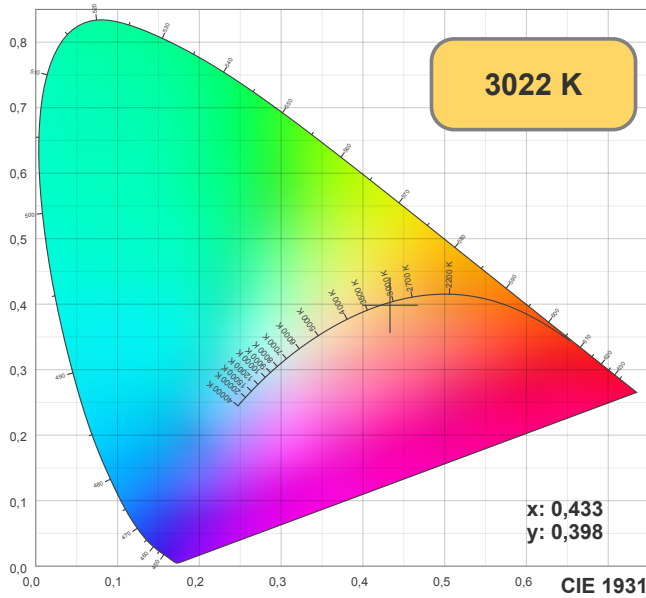
CIE1931
x: 0,433
y: 0,398

Spectra

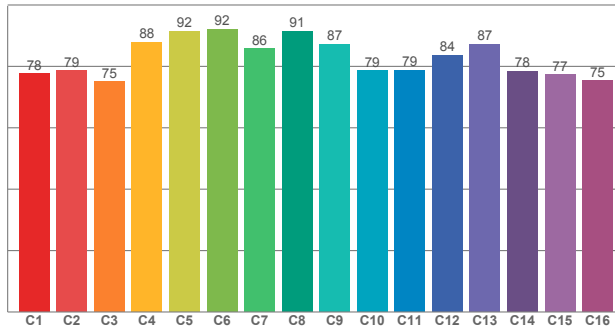


FLEX - PLUS 5000-3000

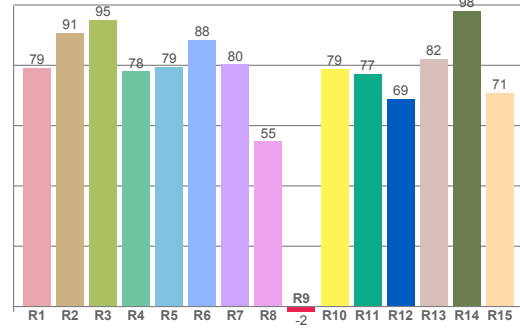
Led Strip



TM30: 82,9



CRI: 80,7 (R1-R8)



CRI R values, only R1-R8 are used to calculate final CRI value

R1	R2	R3	R4	R5	R6	R7	R8	R9	R10	R11	R12	R13	R14	R15
79,10	90,65	94,97	77,98	79,34	88,39	80,29	54,75	-1,80	78,90	77,06	68,87	81,99	97,98	70,77

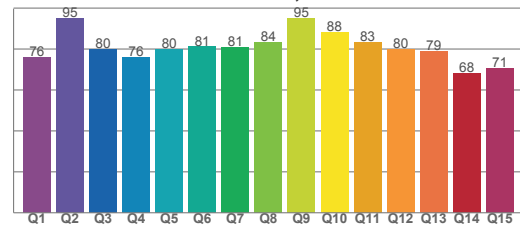
TM30 C values, 16 binned values out of total of 99 C values

C1	C2	C3	C4	C5	C6	C7	C8	C9	C10	C11	C12	C13	C14	C15	C16
77,62	78,69	75,04	87,86	91,51	92,16	85,70	91,47	87,27	78,51	78,78	83,62	87,18	78,45	77,24	75,32

CQS Q values

Q1	Q2	Q3	Q4	Q5	Q6	Q7	Q8	Q9	Q10	Q11	Q12	Q13	Q14	Q15
75,93	95,14	79,91	76,08	80,01	81,17	80,83	83,52	94,92	88,06	83,47	80,05	79,16	68,20	70,69

CQS: 79,7

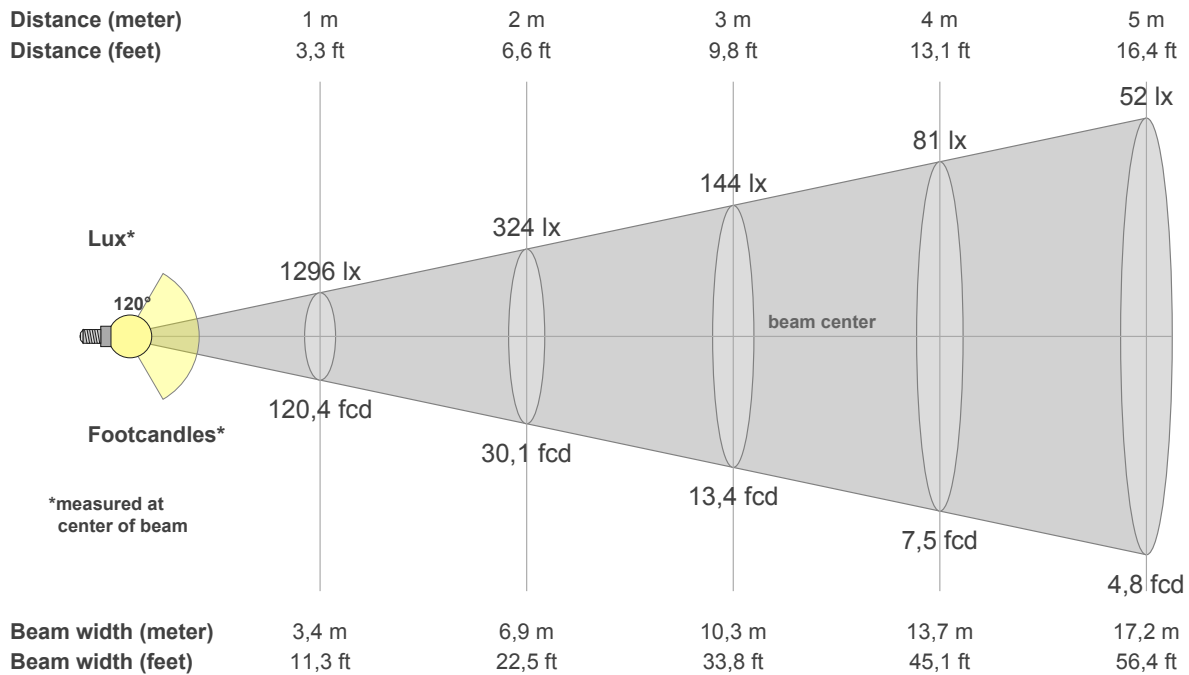


Color parameters

CCT	CRI	CRI R9	TM30 Rf	TM30 Rg	CQS	x	y	u	v	Duv
3022 K	80,7	-1,8	82,9	95,5	79,7	0,4	0,4	0,3	0,3	-0,0017

FLEX - PLUS 5000-3000

Led Strip



Intensities in 0° c-plane

0°	5°	10°	15°	20°	25°	30°	35°	40°	45°	50°	55°	60°	65°	70°	75°	80°	85°	90°	95°
1296	1294	1283	1261	1232	1191	1140	1083	1012	933	847	749	644	533	417	303	192	95	34	2
100%	100%	99%	97%	95%	92%	88%	84%	78%	72%	65%	58%	50%	41%	32%	23%	15%	7%	3%	0%

Intensities in 0° c-plane

0°	5°	10°	15°	20°	25°	30°	35°	40°	45°	50°	55°	60°	65°	70°	75°	80°	85°	90°	95°
1296	1294	1283	1261	1232	1191	1140	1083	1012	933	847	749	644	533	417	303	192	95	34	2
100%	100%	99%	97%	95%	92%	88%	84%	78%	72%	65%	58%	50%	41%	32%	23%	15%	7%	3%	0%

Intensities in 180° c-plane

0°	5°	10°	15°	20°	25°	30°	35°	40°	45°	50°	55°	60°	65°	70°	75°	80°	85°	90°	95°
1296	1289	1272	1245	1211	1167	1115	1056	989	912	831	741	644	542	433	324	216	115	48	4
100%	100%	98%	96%	93%	90%	86%	82%	76%	70%	64%	57%	50%	42%	33%	25%	17%	9%	4%	0%

Intensities in 180° c-plane

0°	5°	10°	15°	20°	25°	30°	35°	40°	45°	50°	55°	60°	65°	70°	75°	80°	85°	90°	95°
1296	1289	1272	1245	1211	1167	1115	1056	989	912	831	741	644	542	433	324	216	115	48	4
100%	100%	98%	96%	93%	90%	86%	82%	76%	70%	64%	57%	50%	42%	33%	25%	17%	9%	4%	0%

Beam angle 50%	Field angle 10%	Cutoff angle 2,5%	Intensity ratio in 120° cone	Intensity ratio in 90° cone
119,6°	167,5°	181,6°	75,5%	50,4%